

## Aquarius Metal Products, Inc.

2475 Millenium Drive, Elgin, IL 60124

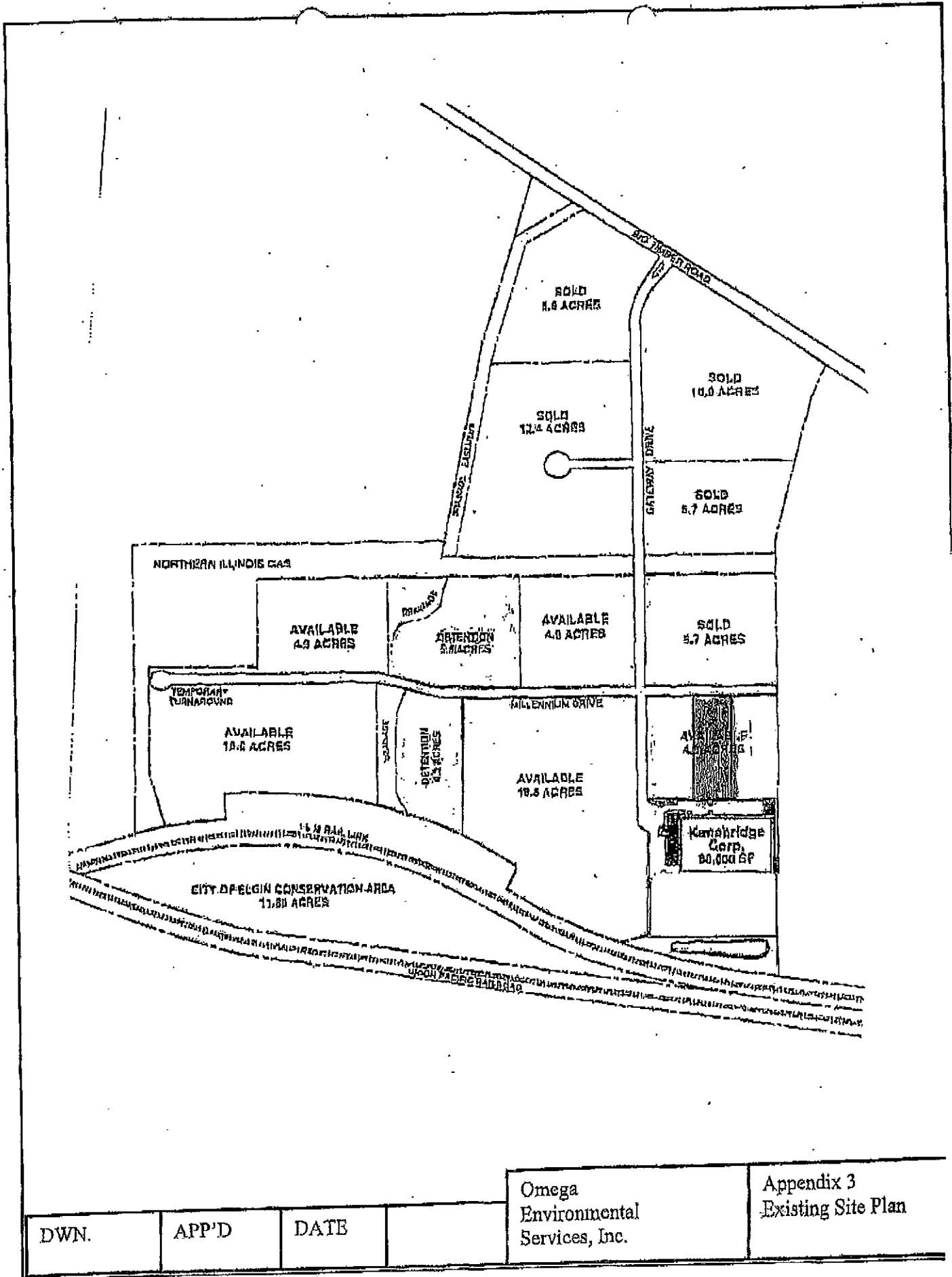
### Office Space

- 28,000- sq. ft. w/ 2,200 office space
- Electrical \* see electrical below
- (4) 15 ton combination heating & cooling rooftop units.
- 50 foot candle level of light in lieu of 25 foot candle level
- 8" thick pre-cast walls, sandwich insulated value R=11 +/-
- Roof insulation 2" polyisocyanurate value R= 14 +/-
- 30,000 LB capacity dock leveler
- (1) 9'x 10' O/H door at interior depressed dock
- (1) 12'x 16' O/H door for grade level drive- in-door
- (1) 12'x 16' O/H door for grade level depressed dock entry
- (6) 4'x 8" skylights w/insulated prefab curbs, fall protection type
- (3) Handicapped accessible washrooms
- 17"x 12"x 9" reinforced concrete oxygen/nitrogen pad with foundation outside
- 144"x 48"x 10" reinforced concrete dust collector outside
- 152"x 82"x 25" reinforced concrete brake press pad in building
- 30' internal halyard satin finished aluminum flagpole w/250 watt metal halide fixture

### Electrical

- F&I (1) 800-amp, 120/240V, 3/phase distribution on column line 2-C with (1) 400-amp, 120/240V sub-panels mounted on east pre-cast wall for equipment tagged D, F, L and S.
- F&I (1) 400-amp, 120/240V, 3/phase, 42- circuit panel with (1) 100-amp, 120/240V, 3/phase sub-panel for equipment tagged M and A on column line 4-C.
- F&I (1) 200-amp, 120/240V, 3/phase, 42-circuit panel for equipment tagged B on west pre-cast wall near column line 2.
- F&I (1) 400-amp, 120/240V, 3/phase panel for equipment tagged W on west warehouse wall of center office
- F&I (156) duplex receptacles. All other equipment to be fed from base building service.
- All equipment location and electrical requirements per E-mail from Mr. Allan Trembl, Jr. dated 9/13/02
- All receptacles in Deburring Department to be ground fault type.
- All disconnecting means per equipment schedule.
- All pricing base on conduits run below grade.





DWN.

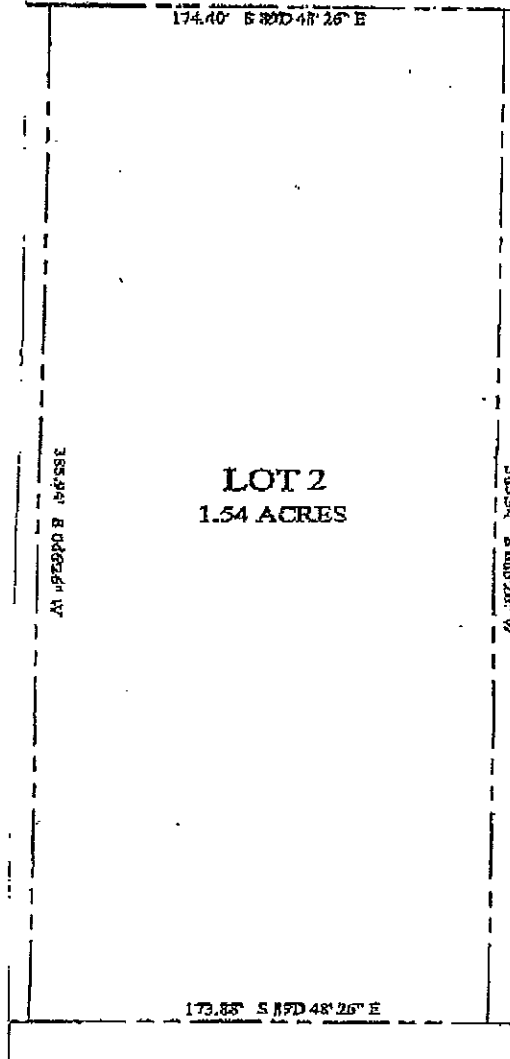
APP'D

DATE

Omega Environmental Services, Inc.

Appendix 3 Existing Site Plan

MILLENNIUM DRIVE



DWN.	APP'D	DATE		Omega Environmental Services, Inc.	Appendix 3 Existing Site Plan.
------	-------	------	--	--	-----------------------------------